

MT318-4.0

MOTORIZED CARD READERS

电动读卡器



Overview

产品概述

铭特电动读卡器具备节省空间、高稳定性、高安全性、防钓鱼及掉电保护等特征。该系列读卡器不仅支持读ISO7810/7811磁卡，而且支持读写ISO7816智能IC卡、ISO14443A类及B类非接触式卡。它们在多种领域中得到广泛的应用，包括自助终端机、加油机、加气机、停车场系统、自助售票机和自动售货机。

MINGTE's compact motorized card readers are developed with space saving, high reliability & security, anti-skimming and power failure protection features. They can read ISO7810/7811 magnetic strip card, read & write ISO7816 smart card and ISO14443 Type A & B Contactless IC Card. They excel in various fields, including Kiosk Terminals, Fuel Dispensers, CNG Dispensers, Parking Systems, Ticketing Machines, and Vending Machines etc.

Features

产品特点

- 结构紧凑、轻便、安全性高、稳定性好、先进的机械结构
 - 支持符合ISO7810、ISO7811标准的磁卡的操作
 - 支持符合ISO7816标准的接触式IC卡的操作
 - 支持符合ISO14443 Type A和Type B标准的非接触式IC卡的操作(可选)
 - 支持符合ISO7816标准的PSAM卡的操作
 - 一到三个SIM卡槽(PSAM)
 - 带安全档门，具备防盗读(抖动进卡)及进卡与退卡检测
 - 可前后方退卡，具备掉电保护功能(可选)
 - 具有防堵塞、防灰尘功能、环境适应性好
 - 可根据用户需求定制各种接口
 - 配多型号插卡口
 - EMV Level 1和PBOC认证
- Compact & light, high security & durability, advanced mechanical structure
 - Support magnetic card (ISO7810 & ISO7811)
 - Support contact IC card (ISO7816)
 - Support contactless IC card (ISO14443 TYPE A & B)-optional
 - Support PSAM & ESAM card (ISO7816)
 - Supplied with 1 to 3 SIM card slots (PSAM)
 - Full security shutter, with anti-skimming & card status detection
 - Front & back side card eject options, with power failure protection function (optional)
 - Clog-proof, dust-proof, environmental adaptability
 - Various interface (customized)
 - With multi bezel (optional)
 - EMV Level 1 and PBOC approved



MT318-4.0



Applications

应用

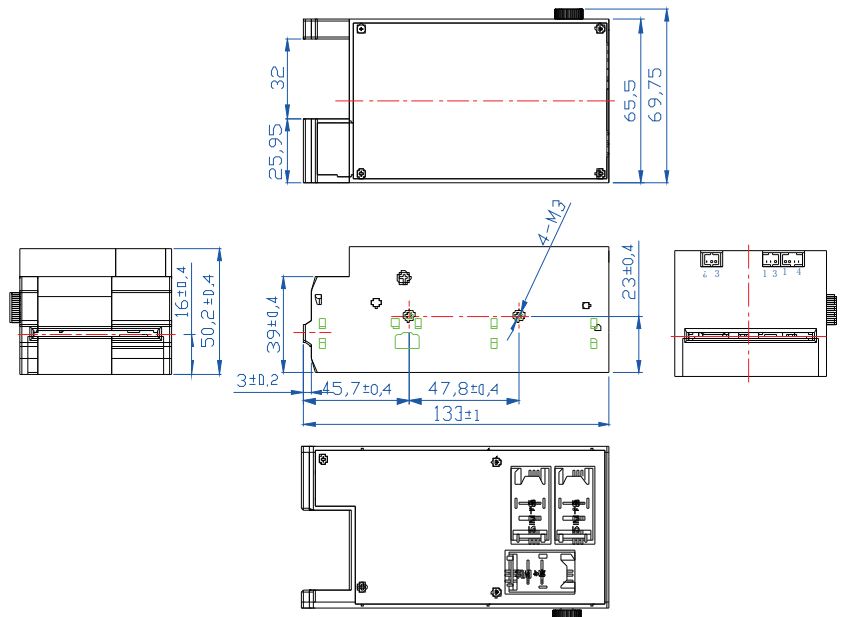
自助终端机 / 加油机 / 加气机 / 停车场系统 / 自助售票机 / 自动售货机

Kiosk Terminals / Fuel Dispensers / CNG Dispensers / Parking Systems / Ticketing Machines / Vending Machines

Specifications

性能指标

支持卡类型 / Card Type		磁卡 / Magnetic Cards	接触式IC卡 / Contact IC Cards	非接触式IC卡 / Contactless IC Cards
磁卡 Magnetic Card	1轨/Track 1	读 / R		
	ISO7810 /7811 2轨/Track 2	读 / R		
	3轨/Track 3	读 / R		
IC卡 IC Card	ISO7816	读、写 / R, W		
	PSAM/ESAM			
	EMV	Level 1认证 / Level 1 Approved		
非接触式卡(可选) Contactless IC Card (Optional)	ISO14443 TYPE A & B & MIFARE	读、写 / R, W		
使用寿命 / Lifetime		>50万次 / >500000 Cycles		
接口 / Interface		RS-232		
工作电压 / Power Supply		DC12V \pm 5%		
工作电流 / Current		最大电流 / Max Current: \leq 2A		
工作温度 / Working Temperature		-10~+55°C		
重量 / Weight		约 / Approx 485g		
备注 / Remark		带档门及多种卡嘴(可选) / With Shutter & Multi Bezel(Optional)		



深圳市铭特科技有限公司
SHENZHEN MINGTE TECH CO., LTD.

地址: 深圳市南山区高新园北区航天微电机大厦科研楼四楼南侧
邮编: 518057
电话: +86-755-86030926(国内销售部)
传真: +86-755-86030955
邮箱: sales@mingte.cn
网址: www.mingtetech.com

Add: 4/F, Aerospace Micromotor Building, High-tech Industrial Park
North, Nanshan District, Shenzhen, China
Postcode: 518057
Tel: +86-755-86232730(Sales Dept.)
Fax: +86-755-86030955
E-mail: sales@mingte.cn
Website: www.mingtetech.com

